



CALIFORNIA'S AGING POPULATION

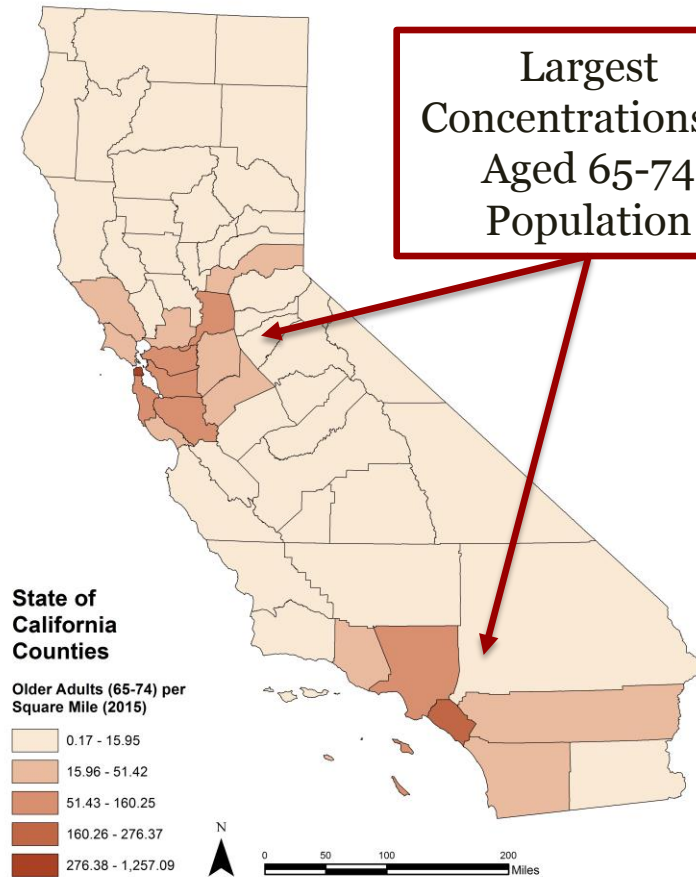
Catherine Pérez

National Institute on Aging Predoctoral Fellow in Gerontology

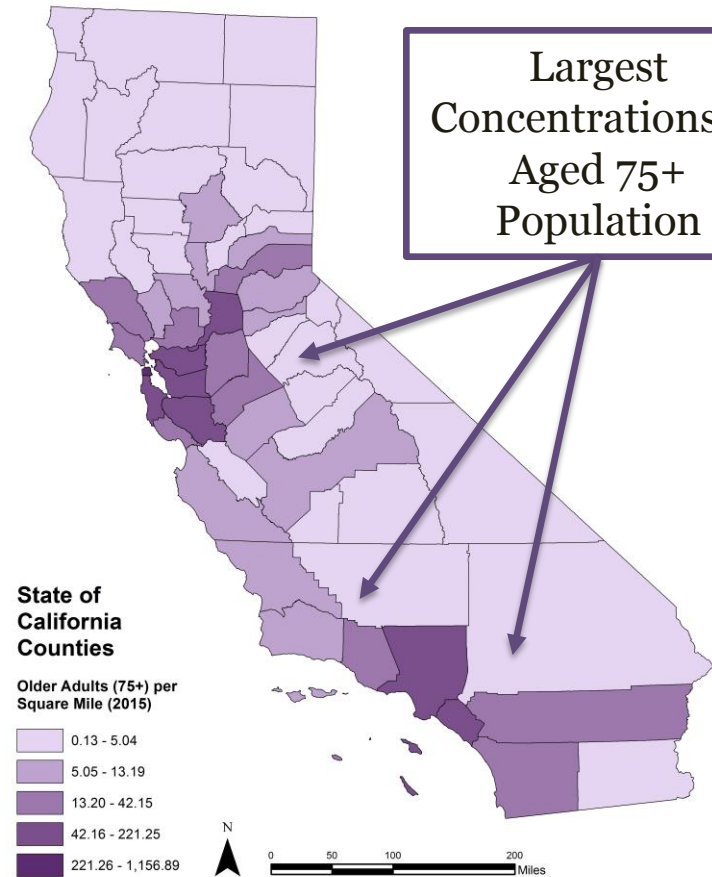
Jennifer A. Ailshire, PhD

Assistant Professor of Gerontology, Sociology, and Spatial Sciences

California's Population Aged 65 and Older, 2015



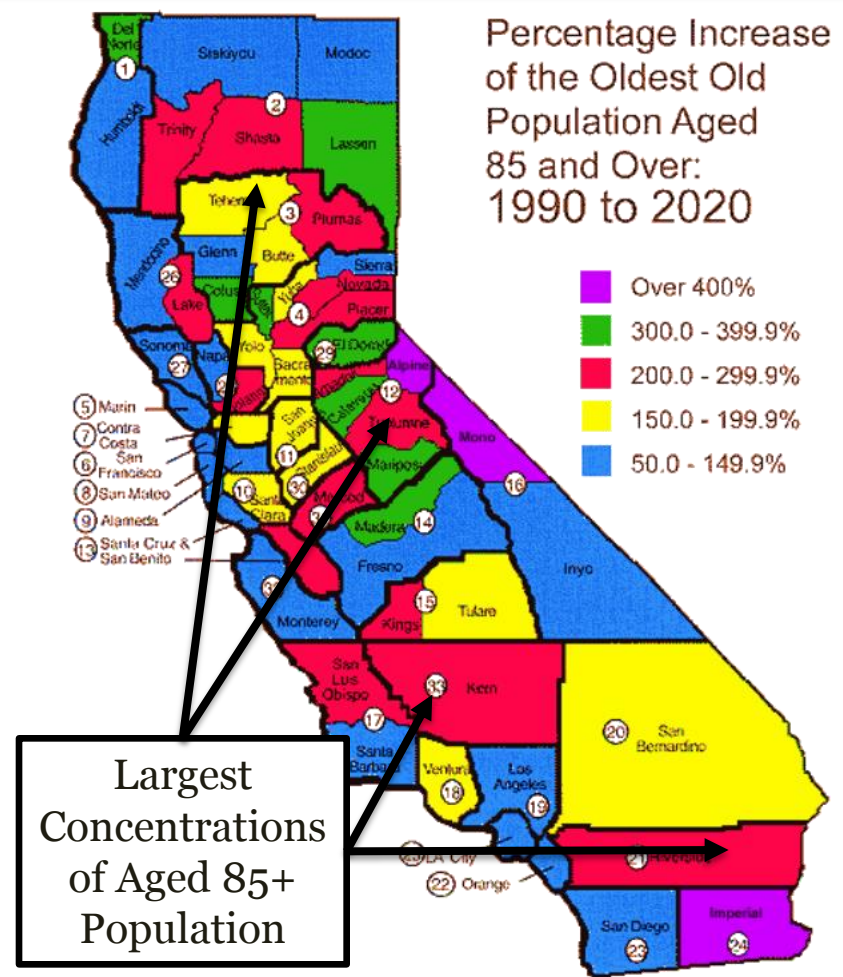
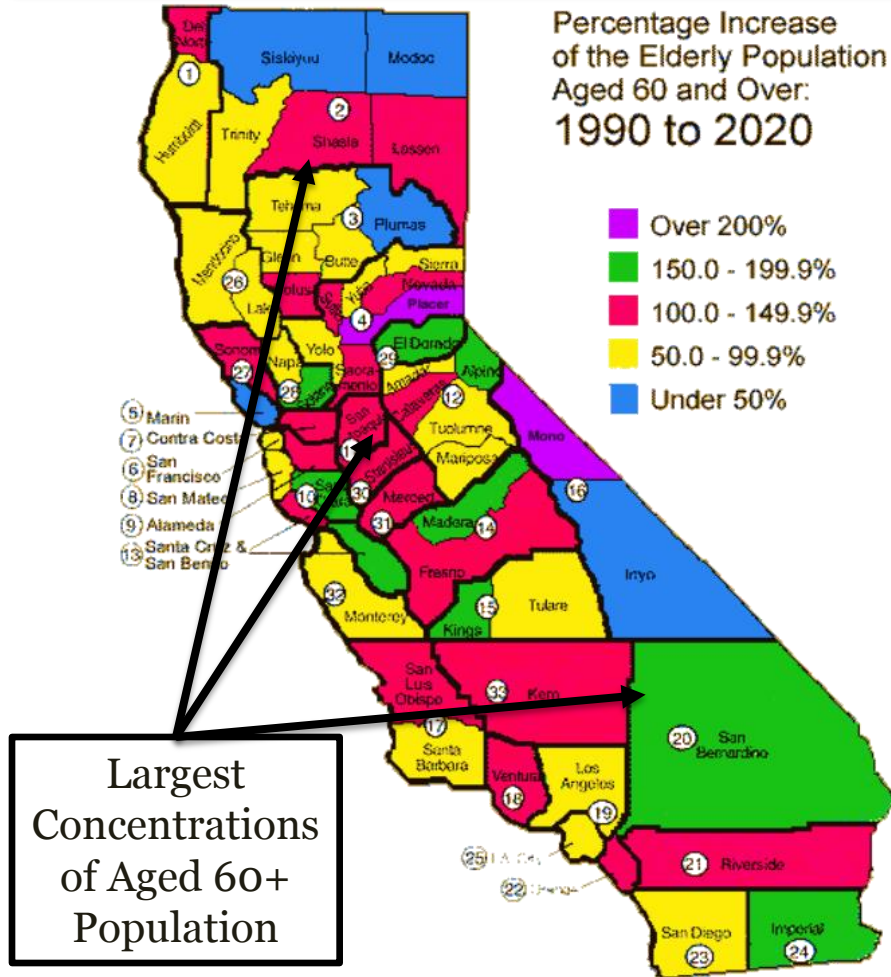
Largest Concentrations of Aged 65-74 Population



Largest Concentrations of Aged 75+ Population

Source: American Community Survey. Map created by Stephen Frochen, USC.

California's Projected Elderly Population



California's Projected Aged 60+ Population, 2010-2060

Top 10 Counties

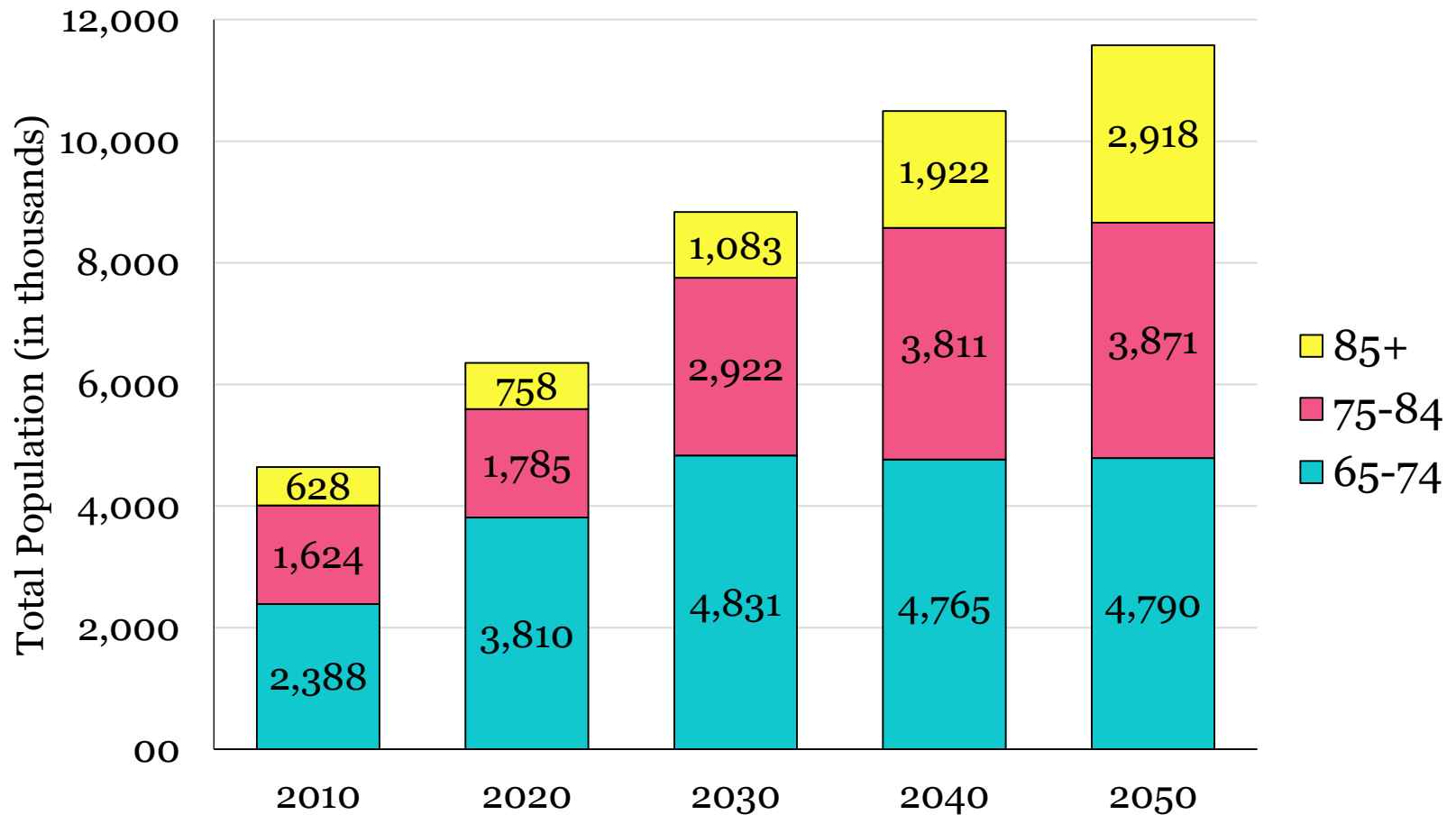
1. Riverside	+246%
2. Santa Clara	+201%
3. San Bernardino	+201%
4. Alameda	+193%
5. Contra Costa	+191%
6. Sacramento	+186%
7. Los Angeles	+168%
8. San Francisco	+157%
9. Orange	+149%
10. San Diego	+144%

Bottom 10 Counties

1. Sierra	-17%
2. Trinity	-13%
3. Plumas	-10%
4. Lassen	+03%
5. Modoc	+04%
6. Del Norte	+21%
7. Mariposa	+38%
8. Inyo	+53%
9. Alpine	+62%
10. Glenn	+86%

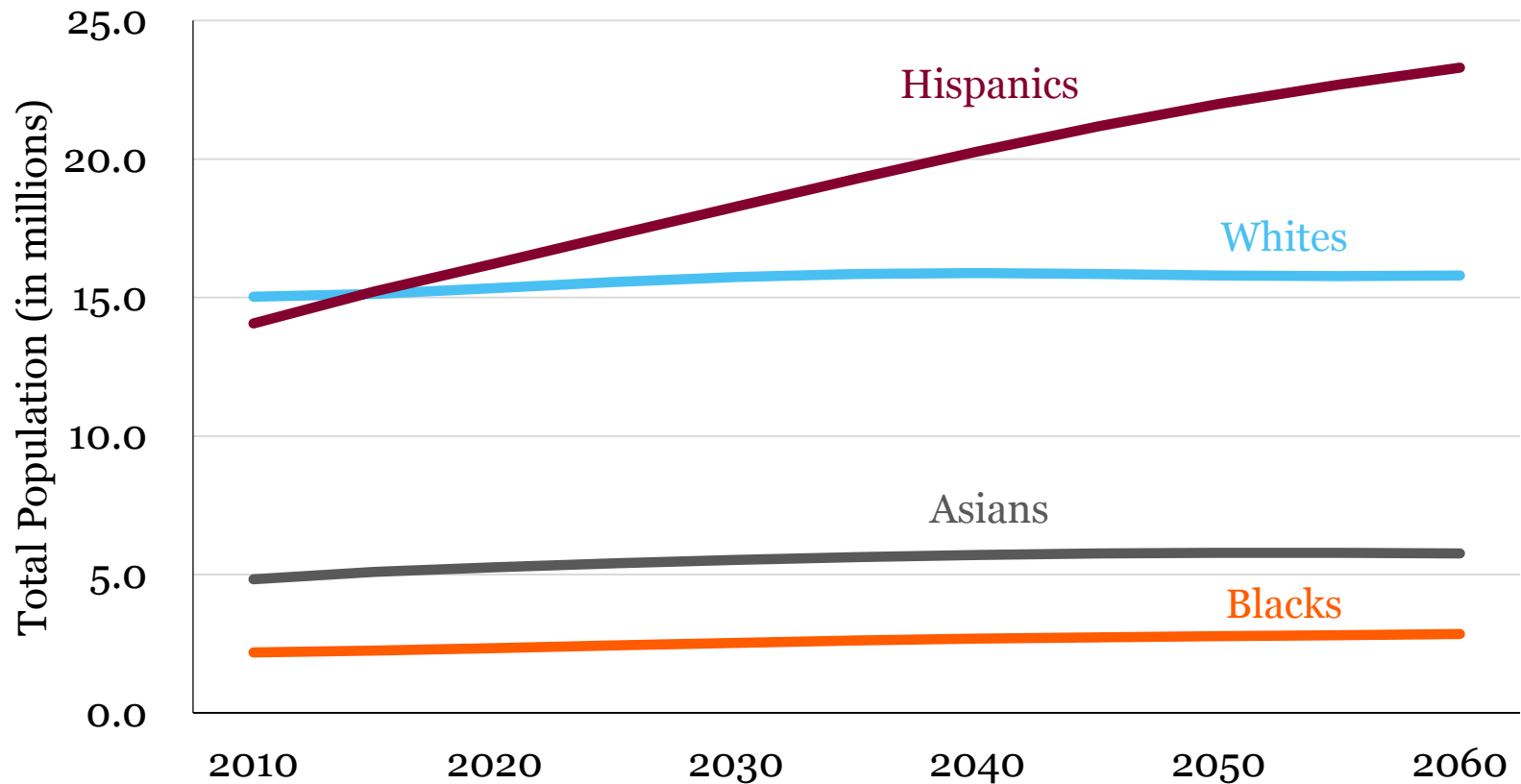
Largest Concentrations of Growth of Elderly are in
Central, Coastal, and Southern California

Projected Population Aged 65 and Older, 2010-2050



Source: California Department of Finance.

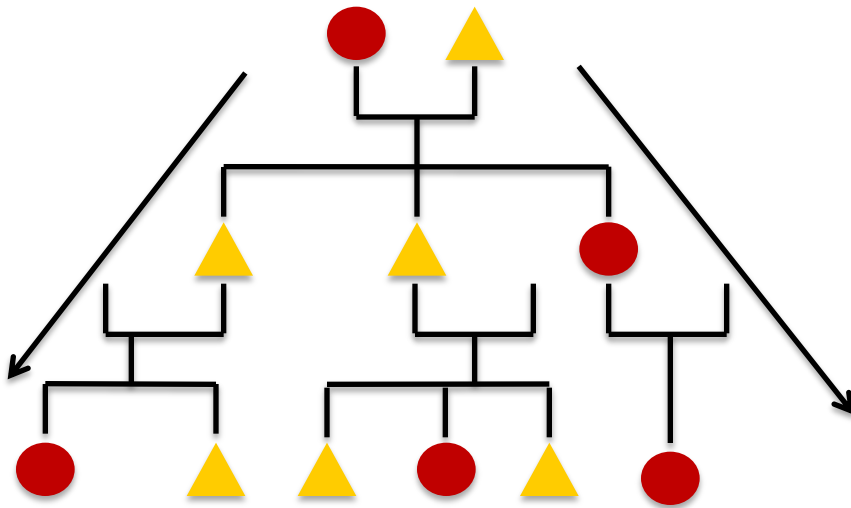
Hispanics are the Fastest Growing Population



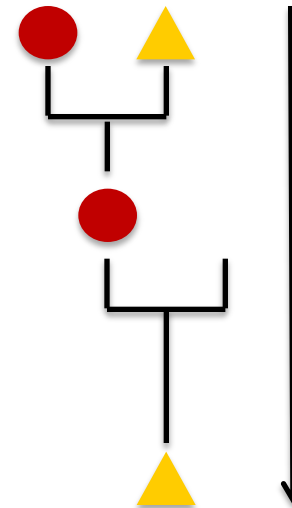
An aging Hispanic population poses challenges:

Poverty, Healthcare Access, Immigrant Status, Disease and Disability

“Traditional” vs. “Beanpole” Family



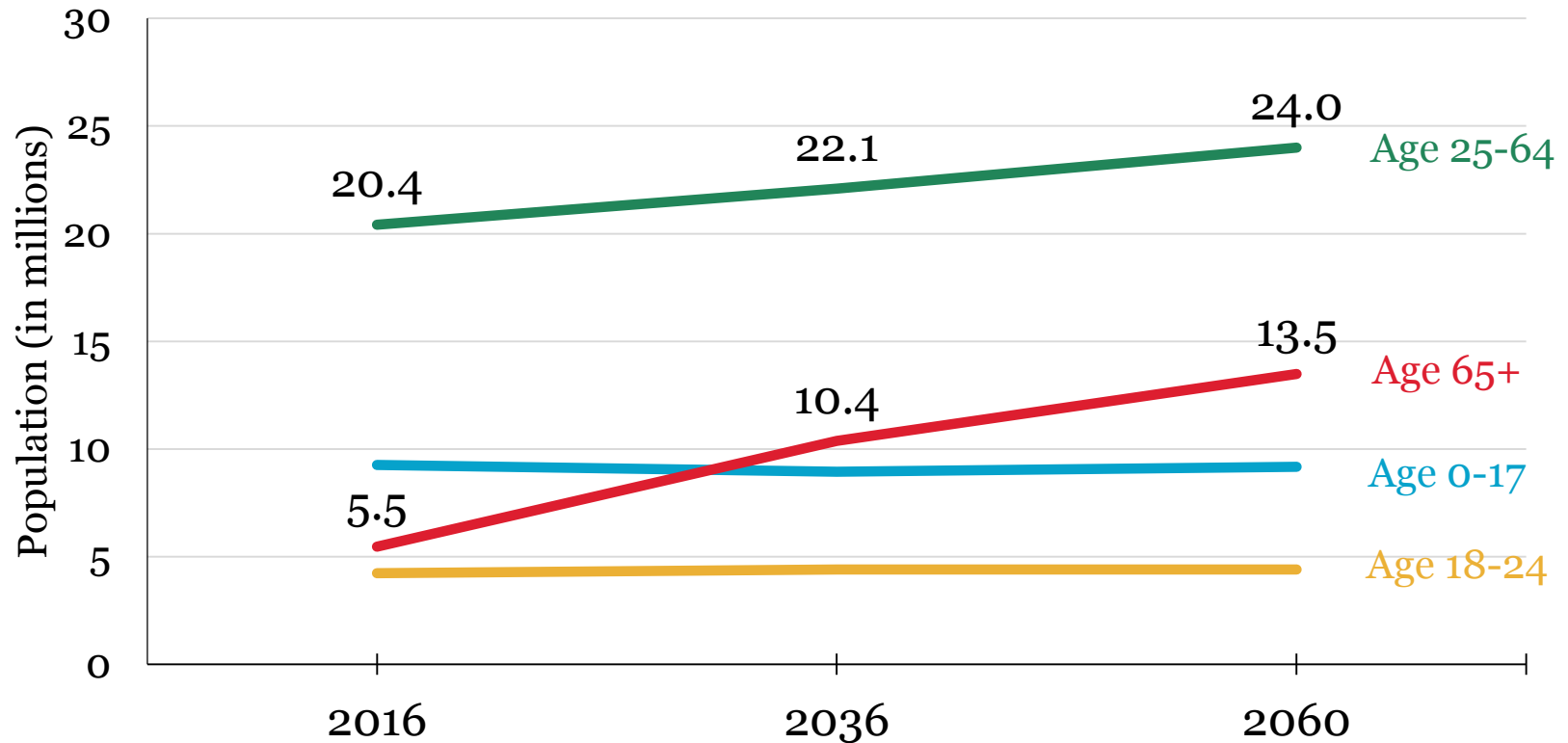
Older adults supported from below by subsequently larger generations



Older adults supported by about as many people in subsequent generations

She faces potentially 3 generations of caregiving (grandparents, parents/in-laws, kids)

Population by Age Category: California, 2016-2060



An aging population means greater need for:
Caregiving, Health Care, \$\$\$\$\$\$\$\$\$\$